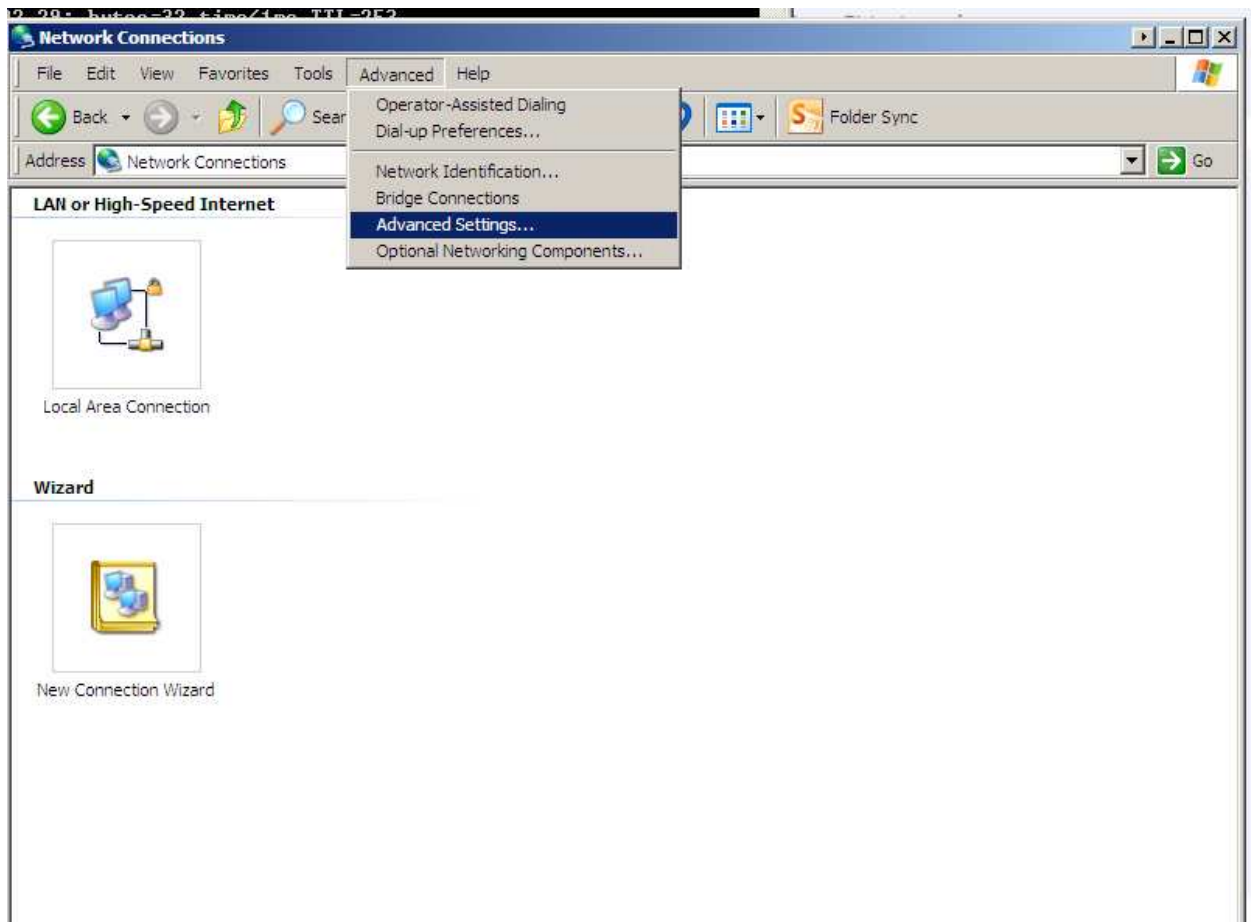
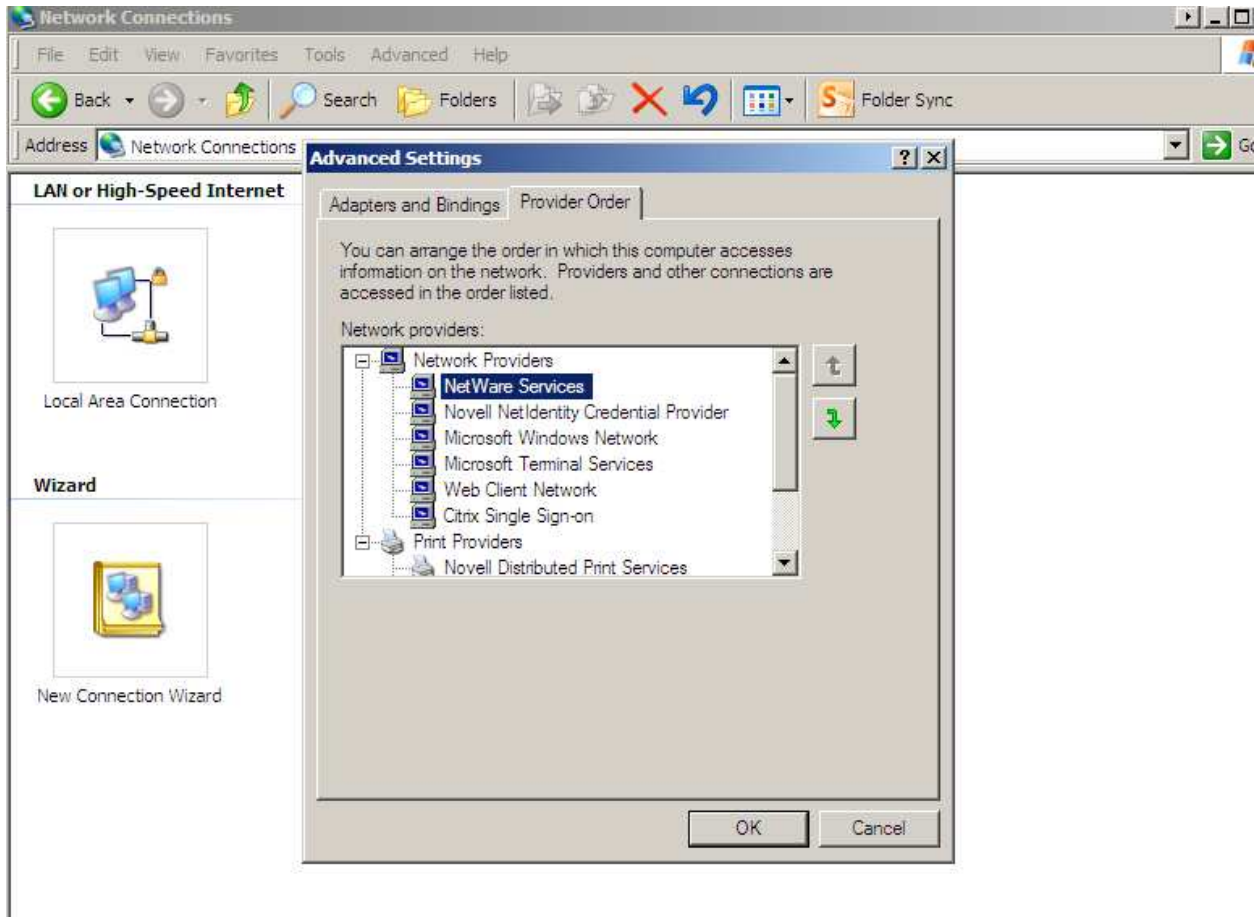


How to resolve slow network response when trying to access network drives.

1. Go to **START > CONTROL PANEL > NETWORK CONNECTIONS**
2. Click **ADVANCED** from the top menu bar and select **ADVANCED SETTINGS**



- When ADVANCED SETTINGS pops up, click on the Provider Order Tab



- NetWare Services needs to be at the TOP of the Network Providers list. If it is not, then click on it in the list and use the up arrow to the right to move it to the top spot.
- Click OK – If you receive an error regarding printing, just click OK or Cancel to get out of the Advanced Settings Window.
- Reboot PC.